

## Nextwindow USB Touch Screen Interface Information

Knowledge of the non-platform-specific USB interface is assumed.

Nextwindow's USB touch screen is a USB 1.1 composite device (multiple interfaces).

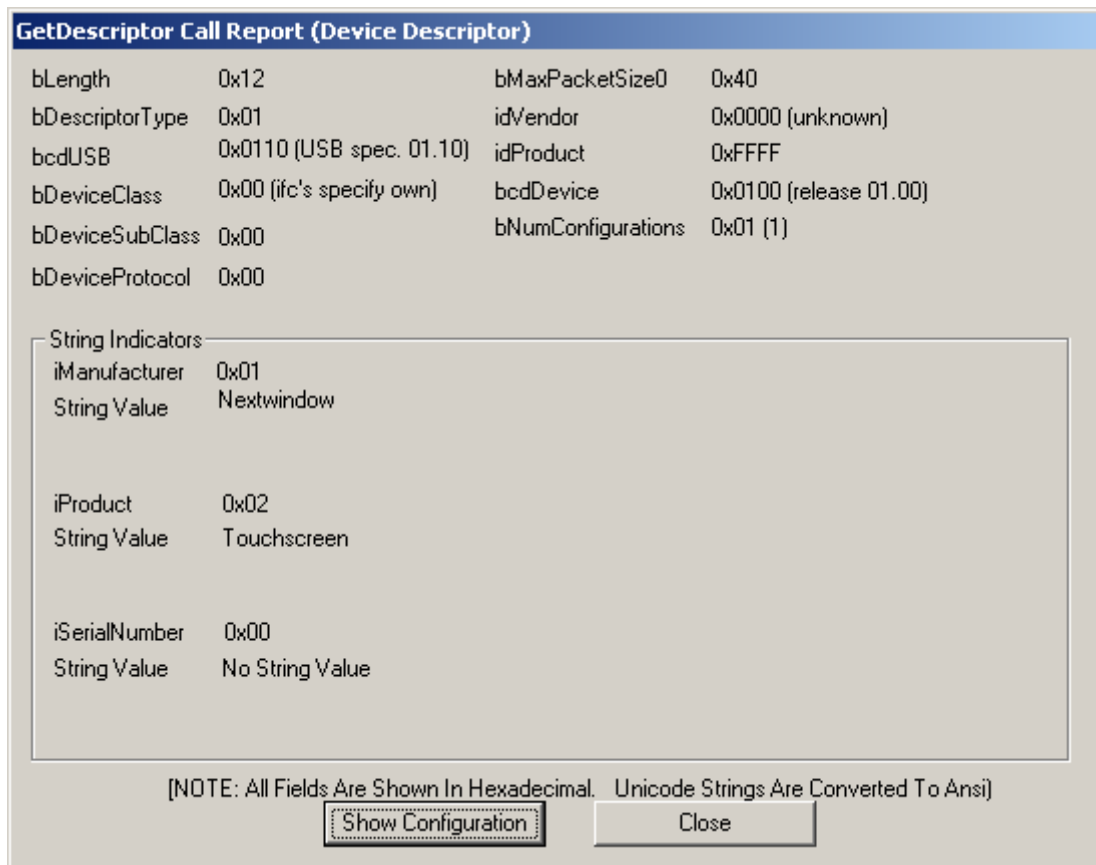
### Composite Device

With the following information, a Nextwindow touch screen will always be unique among other USB devices. A specific VID PID is not needed as the device is HID and needs no specific driver to be installed.

PID = 0xFFFF, VID = 0x0000, Packet size = 0x40

GetString(0x01) = iManufacturer "Nextwindow"

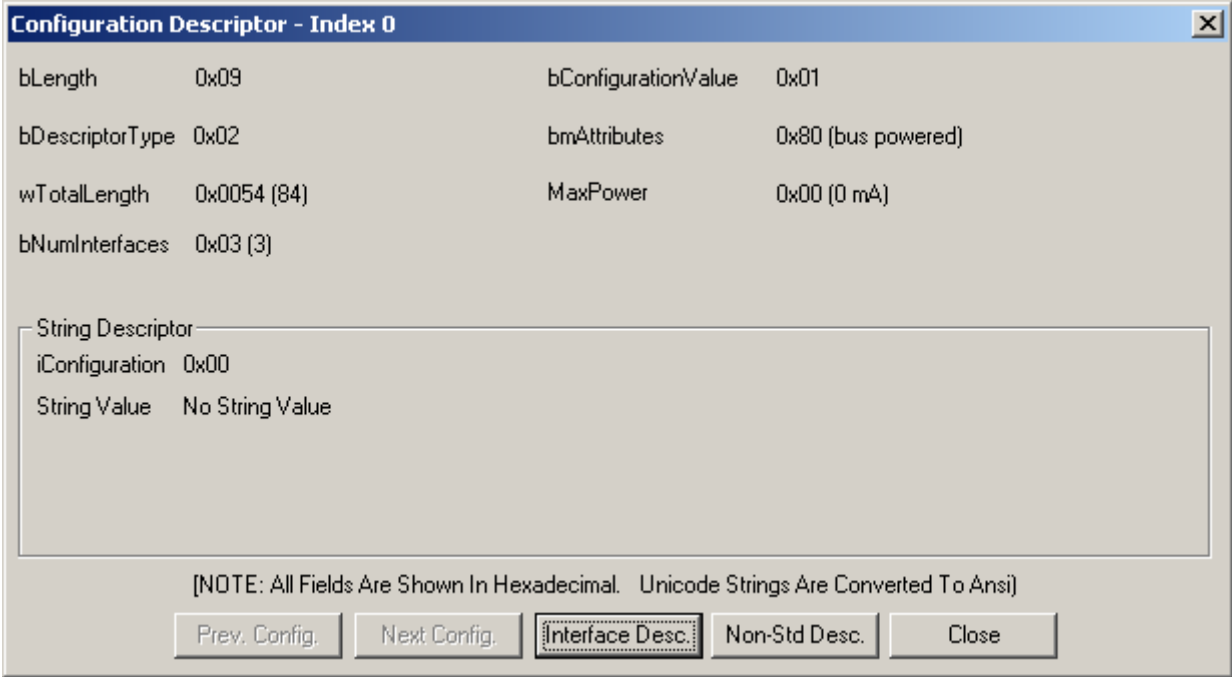
GetString(0x02) = iProduct "Touchscreen"



### Interfaces

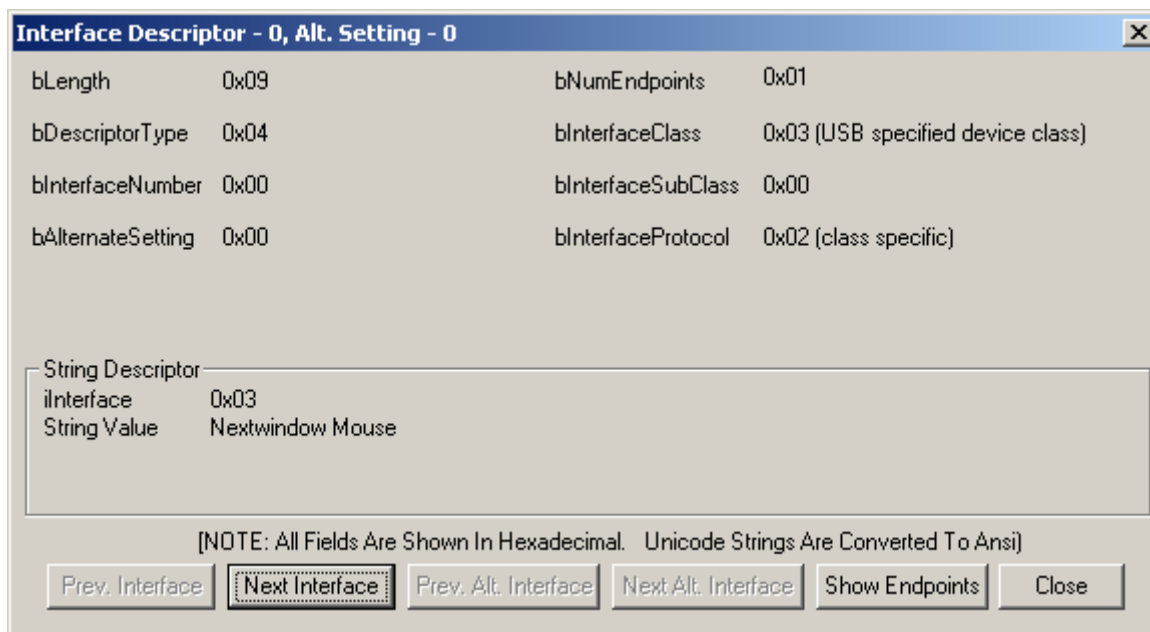
There are three interfaces within the composite device.

- GetString(0x03) = Interface0 "Nextwindow Mouse"
- GetString(0x04) = Interface1 "Nextwindow Comms"
- GetString(0x05) = Interface2 "Nextwindow Keyboard"



## Interface 0 Mouse

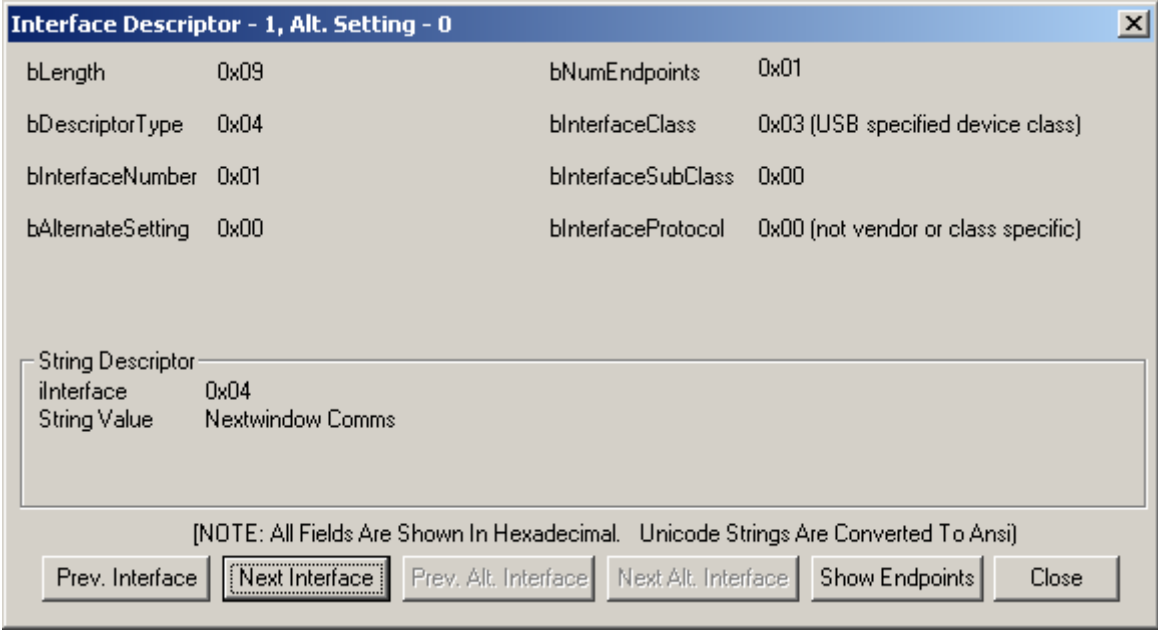
Interface 0 is a HID mouse. This reports absolute x,y screen coordinates directly to the mouse pointer along with button information. This uses one endpoint only.



## Interface 1 Comms

Interface 1 is a HID communications channel. This is used to configure the touch screen features. Touch screen features are configured with NextWindow's USB config application. Users and developers should not write to this channel, as it could configure the touch screen into an incorrect state making the touch screen perform incorrectly.

Alternate reporting modes are available as events from this channel rather than using the mouse interface. Off-screen reporting is also achieved through this interface.



### Interface 2 Keyboard

Interface2 is a HID Keyboard. This is used to pick up scroll lock keyboard events to set the touch screen into calibration mode. This uses one endpoint only.

